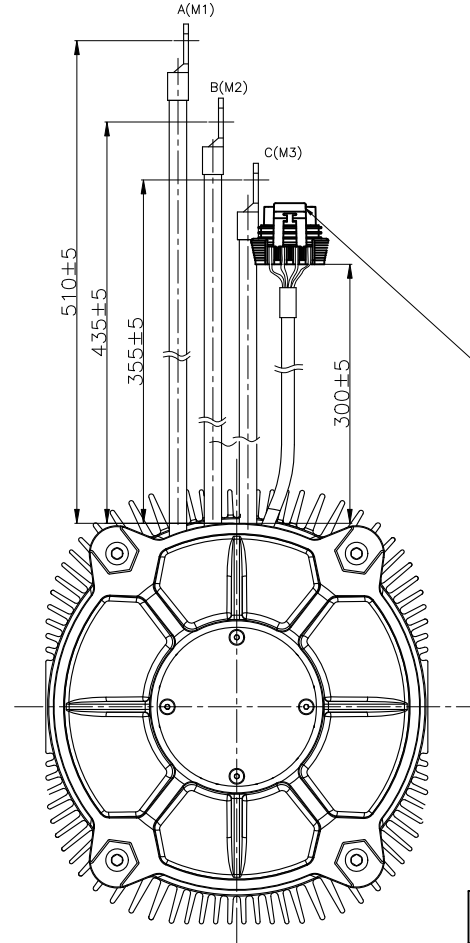
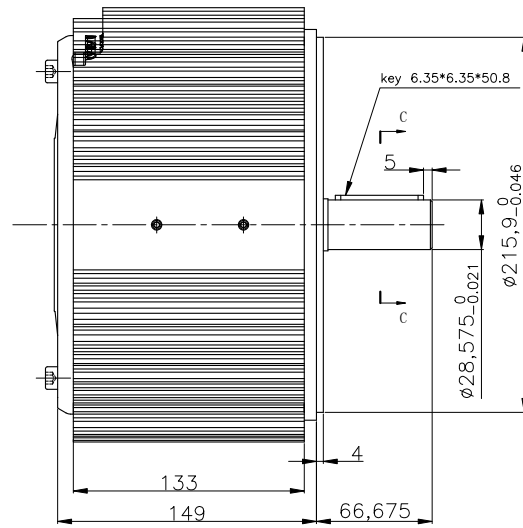
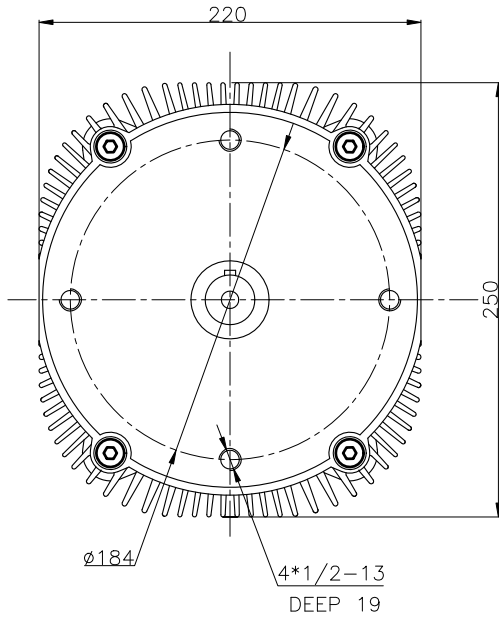
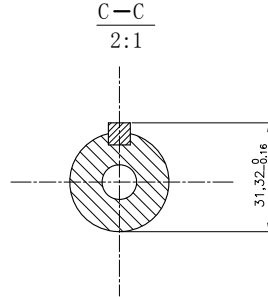


- NOTES:
 1. CCW (from shaft)
 2. TURNS IS 12 PER PHASE
 3. Sensor magnet is to be 2.5mm to 3mm from the sensor mounting face. The minimum amplitude for the sensor is 2 volts AC, peak to peak.
 4. Class H insulation system.



8 pin Metri-pack 150 series:
 Connector: 12047937
 Terminal Position Assurance: 15324525
 Terminal: 12084200
 Cable Seal: 15324973
 Seal: 12059168-B

1. sine/cosine encoder

PIN LOCATION 插孔点	WIRE DESIGNATION 导线标记	WIRE COLOR 导线颜色
A	Cosine (余弦)	WHITE白
B	Sine (正弦)	BLUE蓝
C	Ground (0)	BLACK黑
D	N/C	
E	V _{IN} (+5V)	RED红
F	Shield (保护)	GREEN绿
G	Temp1	YELLOW (-) 黄
H	Temp2	YELLOW (+) 黄

REV.	CHANGES	BY	ECO NO.	DATE	DO NOT SCALE DRAWING	DIMENSIONING AND TOLERANCING PER	MATERIAL	TITLE OUTLINE
-	-	-	-	-	THIS DRAWING IS PROPRIETARY PROPERTY OF MOTENERGY INC	ANSI Y14.5M-1994		永磁式无刷直流磁式电动机 外形图
-	-	-	-	-	CORPORATION DISCLOSED IN CONFIDENCE.	CLASSIFICATION OF CHARACTERISTICS		DRAWN: lxp 15.07.09
-	-	-	-	-	WHICH MAY NOT BE USED OR DISCLOSED WITHOUT PERMISSION. RETURN PROMPTLY AFTER USE.	CRITICAL (C): EMMISIONS (E): MAJOR (M):		DESIGN VENDOR: -
-	-	-	-	-			S/N: CODE:	OJ/T. 302. 893
-	-	-	-	-			MODEL NO:	REV. SHEET
-	-	-	-	-			SIM TO:	1 of 1