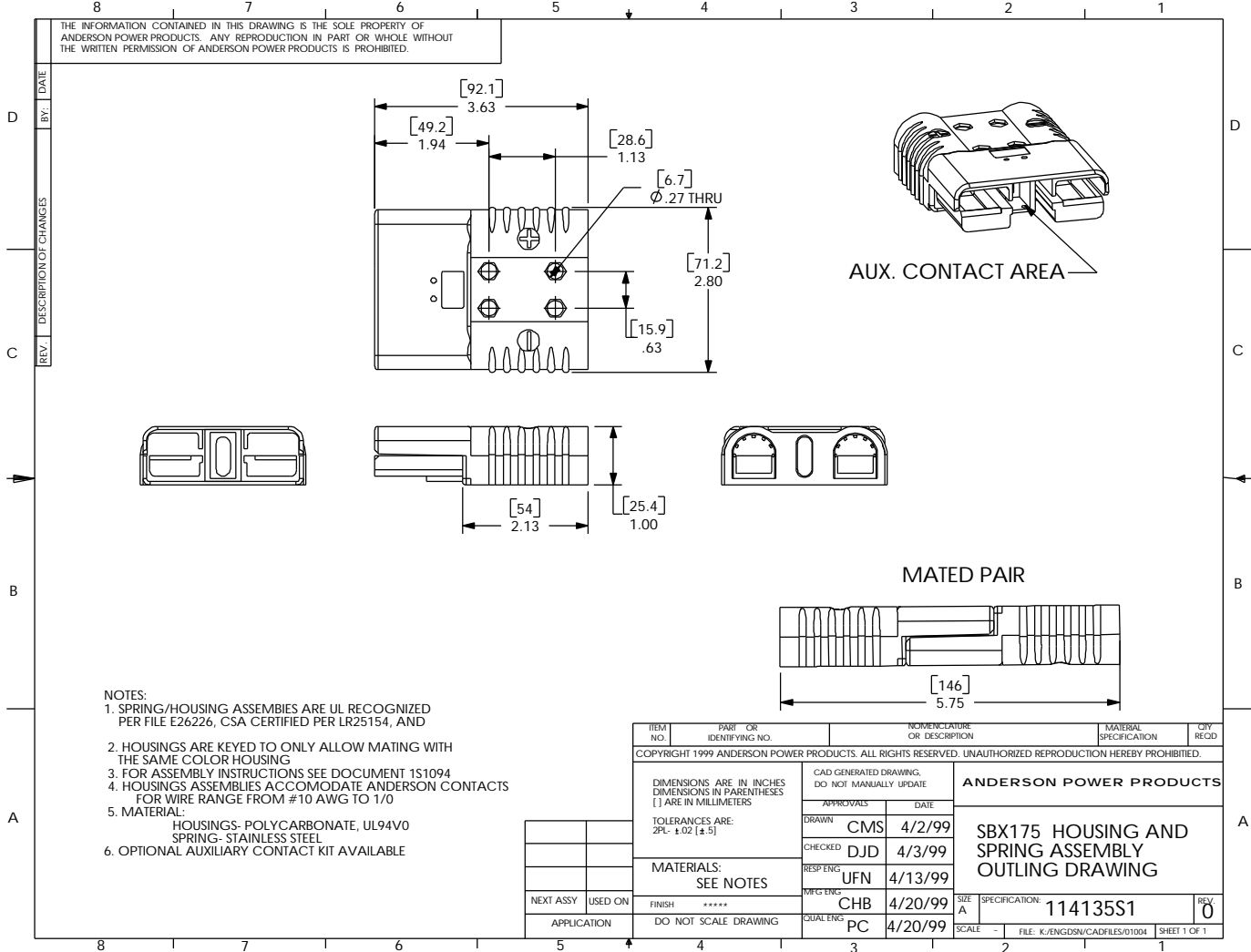


THE INFORMATION CONTAINED IN THIS DRAWING IS THE SOLE PROPERTY OF ANDERSON POWER PRODUCTS. ANY REPRODUCTION IN PART OR WHOLE WITHOUT THE WRITTEN PERMISSION OF ANDERSON POWER PRODUCTS IS PROHIBITED.



- NOTES:
1. SPRING/HOUSING ASSEMBLIES ARE UL RECOGNIZED PER FILE E26226, CSA CERTIFIED PER LR25154, AND
 2. HOUSINGS ARE KEYED TO ONLY ALLOW MATING WITH THE SAME COLOR HOUSING
 3. FOR ASSEMBLY INSTRUCTIONS SEE DOCUMENT 1S1094
 4. HOUSINGS ASSEMBLIES ACCOMODATE ANDERSON CONTACTS FOR WIRE RANGE FROM #10 AWG TO 1/0
 5. MATERIAL:
HOUSINGS- POLYCARBONATE, UL94V0
SPRING- STAINLESS STEEL
 6. OPTIONAL AUXILIARY CONTACT KIT AVAILABLE

NEXT ASSY	USED ON
APPLICATION	DO NOT SCALE DRAWING

ITEM NO.	PART OR IDENTIFYING NO.	NOMENCLATURE OR DESCRIPTION	MATERIAL SPECIFICATION	QTY. REQD.
COPYRIGHT 1999 ANDERSON POWER PRODUCTS. ALL RIGHTS RESERVED. UNAUTHORIZED REPRODUCTION HEREBY PROHIBITED.				
DIMENSIONS ARE IN INCHES DIMENSIONS IN PARENTHESES [] ARE IN MILLIMETERS		CAD GENERATED DRAWING. DO NOT MANUALLY UPDATE		
TOLERANCES ARE: 2PL- ±.02 [±.5]		ANDERSON POWER PRODUCTS		
MATERIALS: SEE NOTES		SBX175 HOUSING AND SPRING ASSEMBLY OUTLING DRAWING		
APPROVALS	DATE	SPECIFICATION: 114135S1		
DRAWN	CMS 4/2/99	SIZE	A	
CHECKED	DJD 4/3/99	SCALE	-	
RESP ENGS	UFN 4/13/99	FILE:	K:/ENGDGN/CADFILES/01004	
MFG ENGS	CHB 4/20/99	SHEET	1 OF 1	
CUAL ENGS	PC 4/20/99	REV 0		