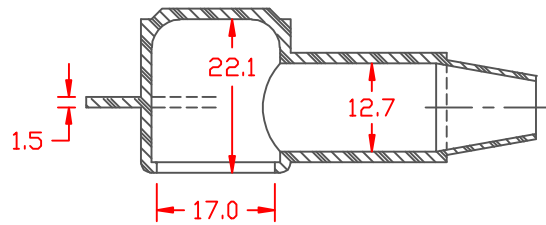


PROPRIETARY RIGHTS ARE CLAIMED FOR THE MATERIAL DISCLOSED IN THIS DRAWING.

LTR.	REVISIONS	DATE
△	REDRAWN TO AGREE WITH PARTS AS MFG'D.	09MAY11

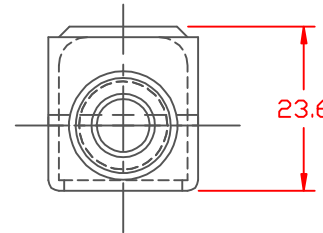
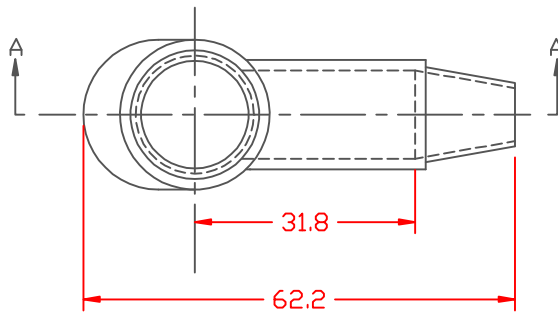


SECTION A-A

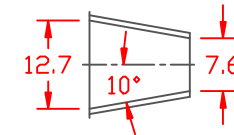
TYP. WALL THICKNESS = 1.5

SEAL NO. 2 SHOWN

R10.9



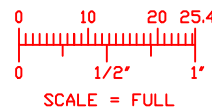
SEAL OPTIONS
SEAL THICKNESS = .8

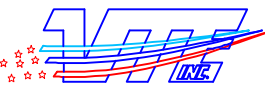


NO. 2
Cable Gages
8 - 2

TOLERANCE UNLESS OTHERWISE SPECIFIED: ±.030"/±0.8mm
RADIAL DIAMETERS TO BE MEASURED OVER MANDRELS,
RING GAGES OR PIN GAGES OF SUITABLE SIZE

Material:	1101650102
Material Part No	9812-65-RED683
Max. Operating Temp:	105 C
Shore Durometer	"A" 10 SEC. 67/62
Specific Gravity:	1.34
Ult. Elongation %:	475
Brittle Temp:	-44 C
Tensile Strength PSI:	1547 PSI
Dielectric Strength, v./ml	540
U.L. Rating:	94 V2
MEETS:	FMVSS.302



		VTE Incorporated 5437 Robinson Road, P.O. Box 790 Pellston, Michigan 49769 Telephone: 1-800-527-9256, 231-539-8000 FAX: 231-539-0914	
		REF:	DATE:
	3-18-98	JC	6.5g
		CHK'D BY:	BRH
TITLE: TERMINAL INSULATOR CAP			
MATERIAL:		PART NO.	
		218E2V02	
COLOR:	DRG CLASS		